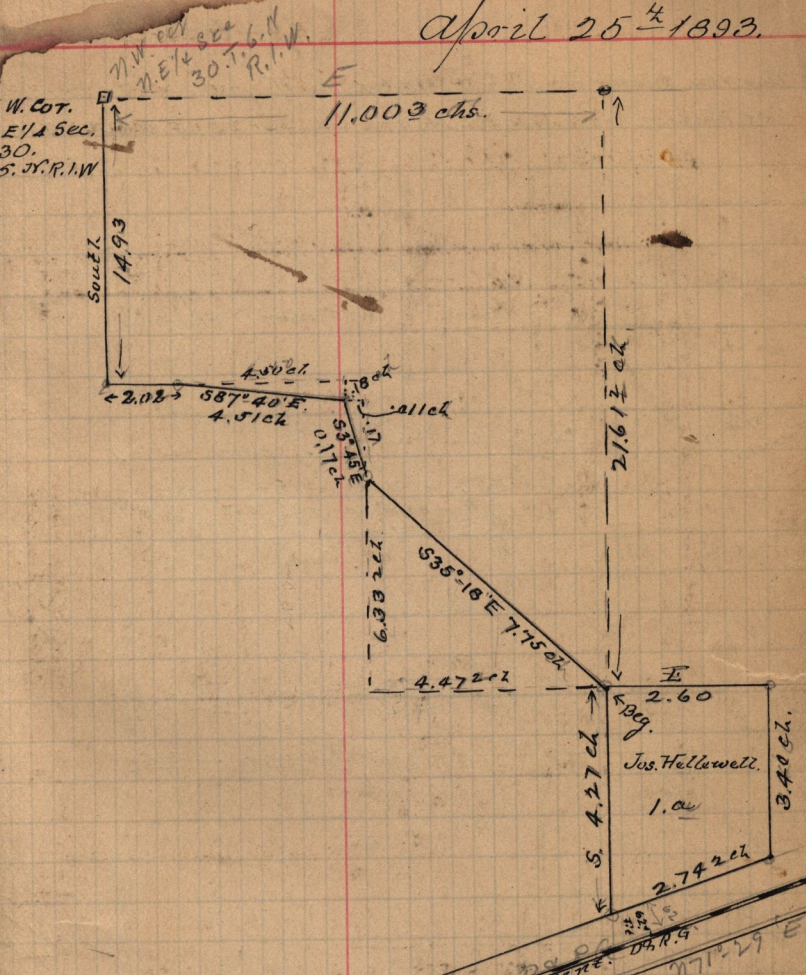


April 25th 1893.



be conveyed by
~~F. Middleton and wife Martha C. Middleton~~
 to Jos. H. Hellewell.

Deed made out by self Apr. 25-1893. Pt N, E 1/4 Sec 30
 T. 6. N. R. 1. W. Sec. 21. 55 ch S. 2nd 11.00 chs E
 of N.W. cor. 1/4 E. 2.60 ch S 3.40 ch. to pt 62.5 ft N. at Rd.
 front cut. D.R.G. - S 71° 29' W. 2.74 ch. par to cent said track to